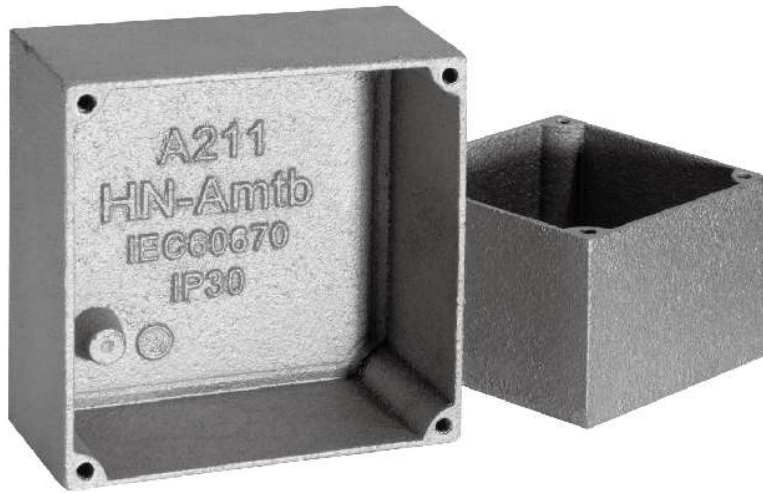


Adaptable Junction Boxes

生鐵過路箱



Hot Dipped Galvanized Cast Iron Adaptable Junction Box

熱鍍鋅生鐵過路箱

Size (mm) 尺寸(毫米)	75x75x50	75x75x75	100x100x50	100x100x75	100x100x100
Model No. 產品型號	A210	A210S	A211	A211S	A211H
Qty/Ctn 數量(每箱)	50	50	40	20	20
Size (mm) 尺寸(毫米)	150x150x50	150x150x75	150x150x100	225x225x75	300x300x75
Model No. 產品型號	A212L	A212	A212H	A213	A214
Qty/Ctn 數量(每箱)	10	10	10	5	5

Material: Grey Cast Iron

Standard: IEC60670-1

Protection: Hot Dipped Galvanized

Ingress Protection: 30 and can obtain 55 if fitted with a special design box cover.

Inlet openings will be made during installation

Note: Dacromet coating can be offered

材質：生鐵

標準：IEC60670-1

保護：熱浸鋅

IP防護等級：30；配合特別設計的箱蓋，IP可達55。

安裝時間開孔

備注：可另選達克羅表面處理